

Tools you will need are a 10mm spanner and a 13mm socket wrench with a ratchet



As lifting equipment I use a MC jack and 4 supports



I lift the entire Twizy with the MC jack and place the 4 supports under it



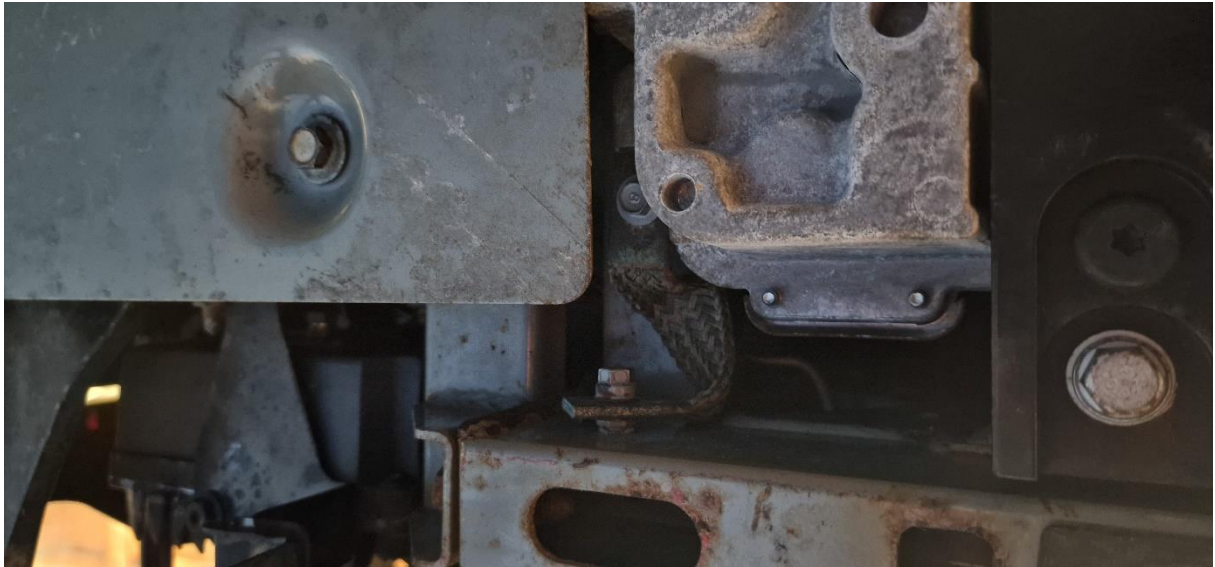


Start by removing the base plate that is under the engine behind the battery. 4 13mm screws

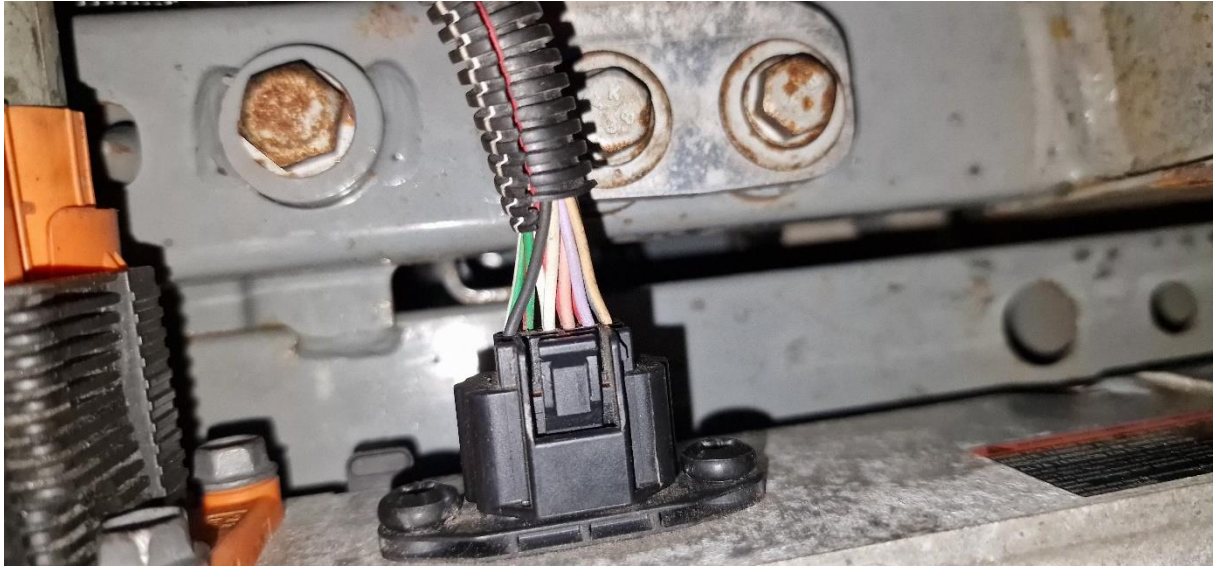




unscrew the flat GND wire (10mm)



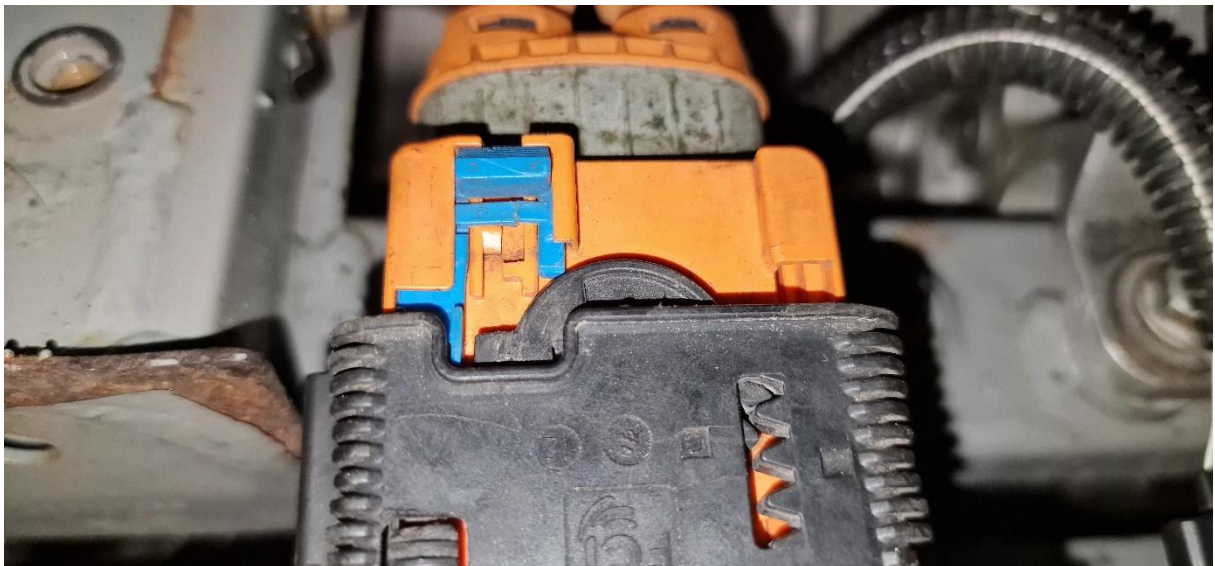
Disconnect the 12 PIN connector by pressing in the middle and gently pulling it out

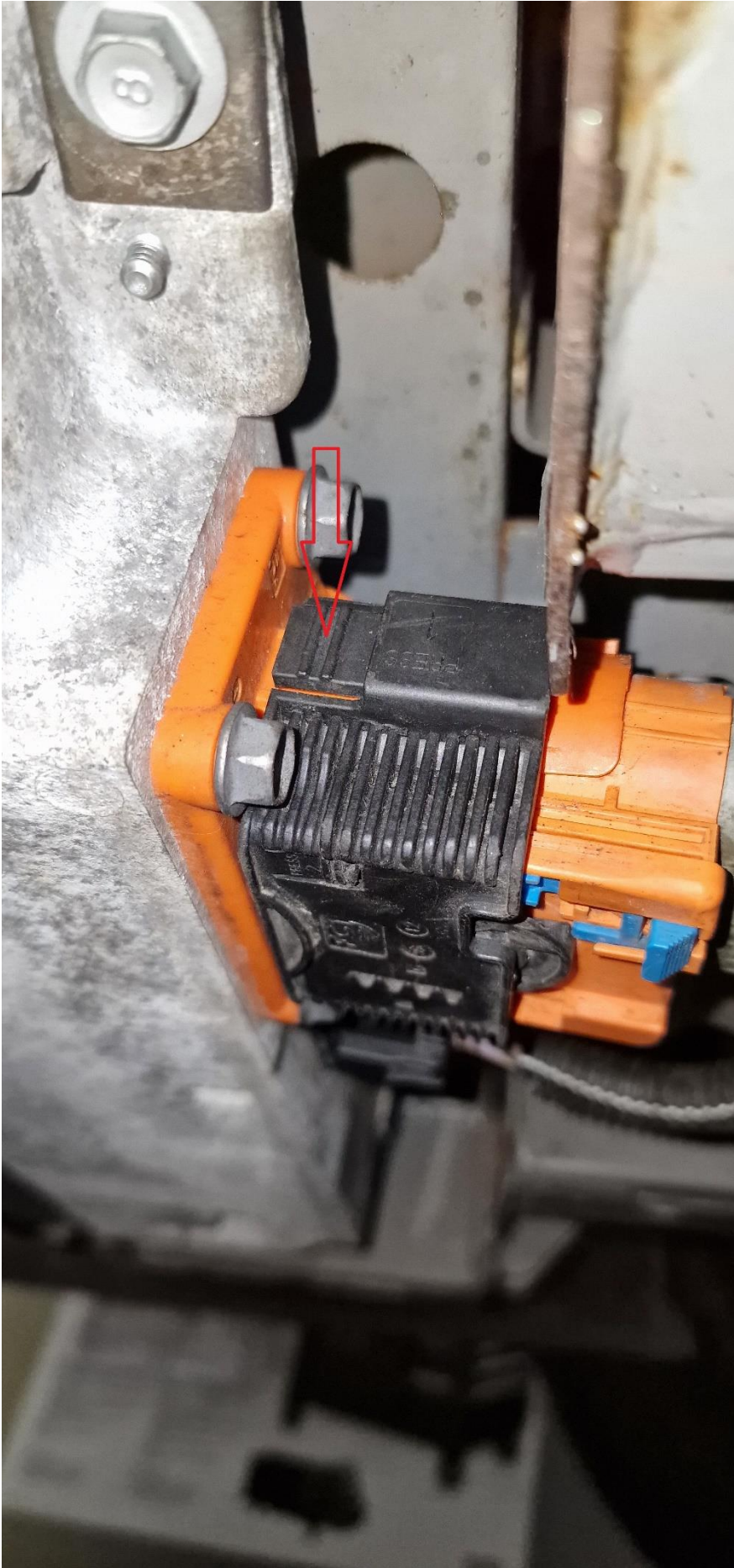


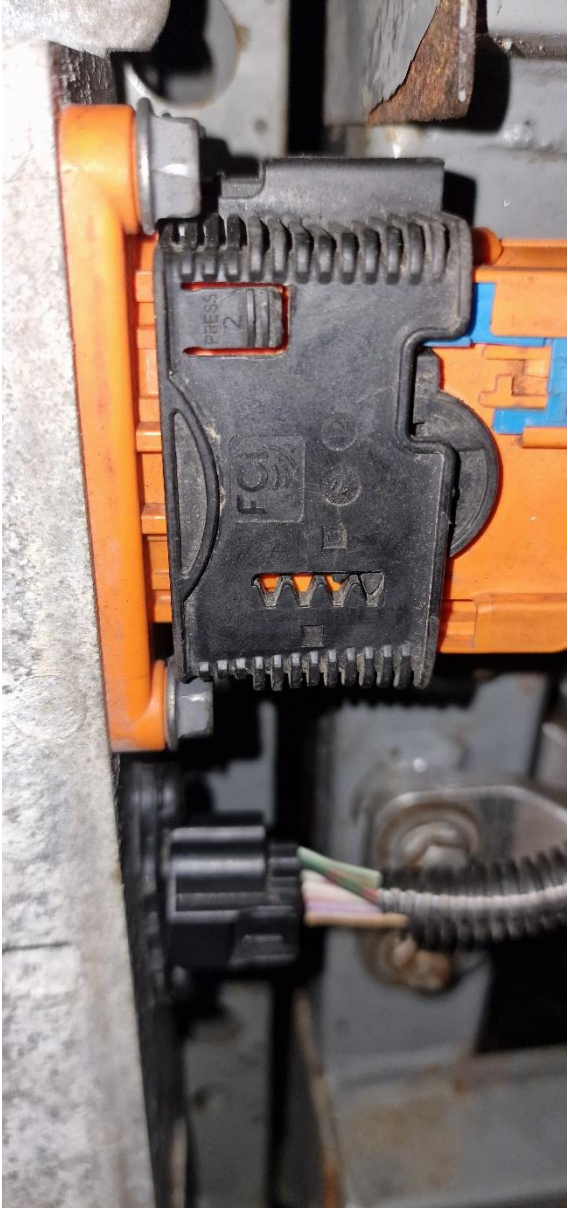


the 2 orange connectors have a 3 step removal system.

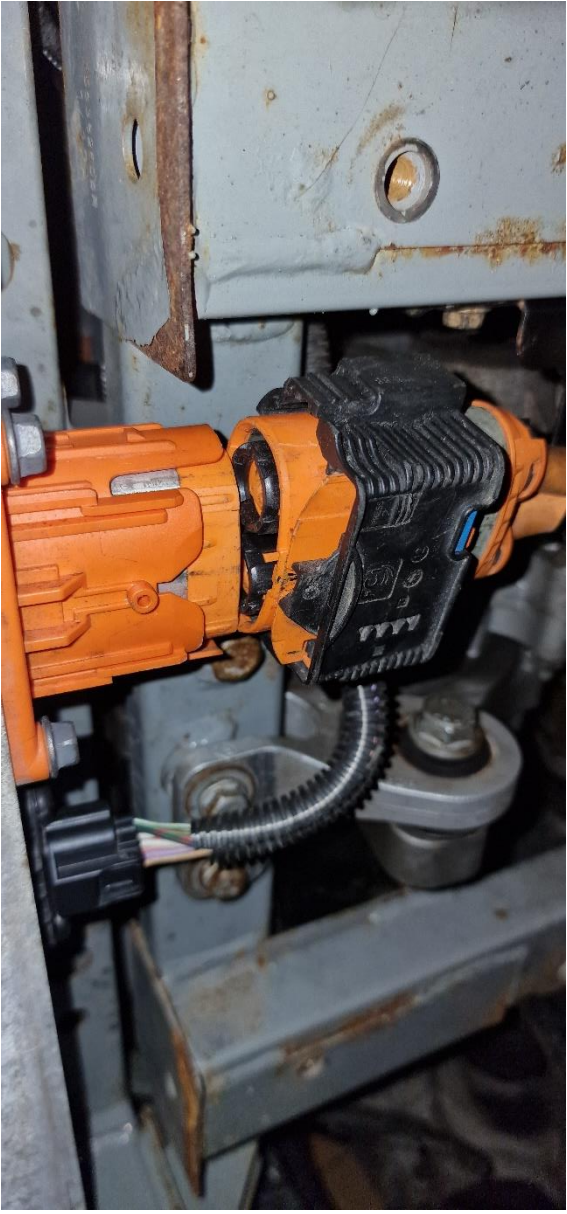
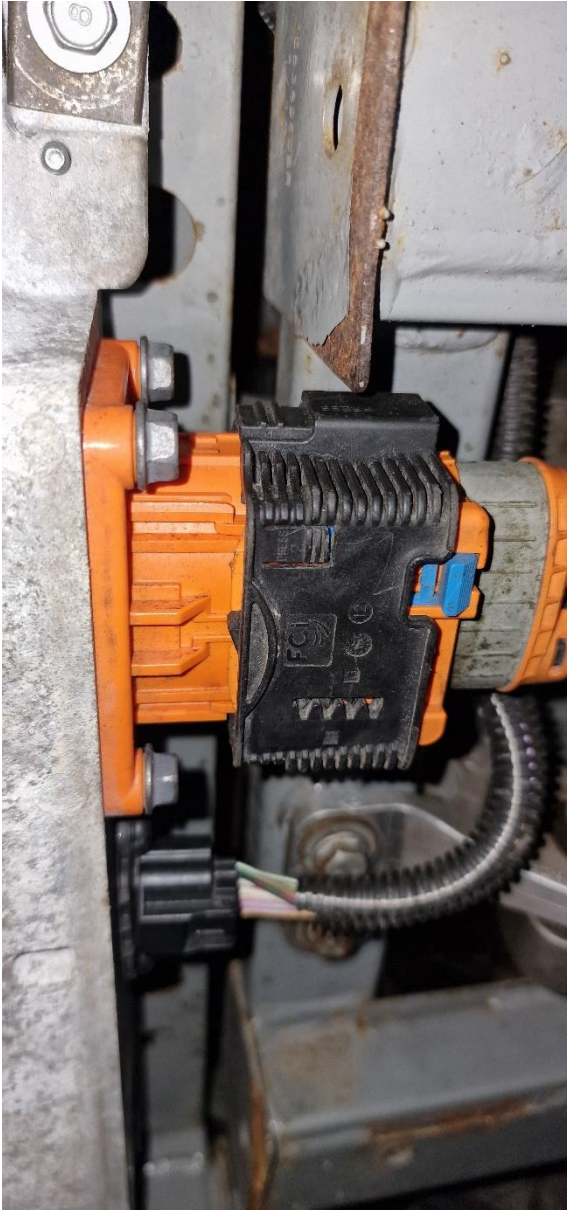
1. push the blue plastic lock backwards
2. Press in Press point 1 on the side and pull the black cap out until it stops.
3. Now press on pressure point 2 and pull the connector completely out

















The battery itself is screwed on with 8 13mm screws.

First remove 4 of them and unscrew the last 4 almost completely.

Now insert the jack and lift the battery a few mm and remove the last 4 screws













'Here you see the 2 pressure points on the charging connector

